

COUPERS

LIFESTYLE PROPERTIES



1 Watson Bend Fingal VIC

4 2 2

Escape the rush of city life and discover 1 Watsons Bend, where coastal tranquillity meets the prestige of Moonah Links. Perfectly positioned on a corner location, this quality-built residence captures uninterrupted views across the 6th to 10th fairways of The Legends Course, offering a lifestyle that blends privacy, sophistication and ease.

The design is tailored for low-maintenance living while maximising natural light and sweeping outlooks. A second living space on the entry level opens onto a covered balcony, complemented by a versatile fourth bedroom or office and a secure double garage with internal access. Upstairs, expansive open-plan living and dining areas frame the golf course through floor-to-ceiling windows and

Type : House
Land Size : 385 sqm
View : <https://coupersrealty.com.au/8288780>



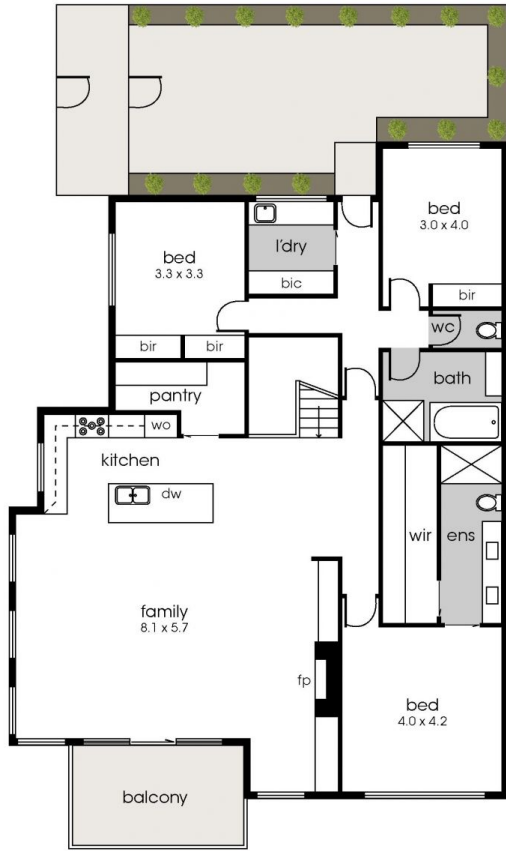
Paul Wells
0428 745 449



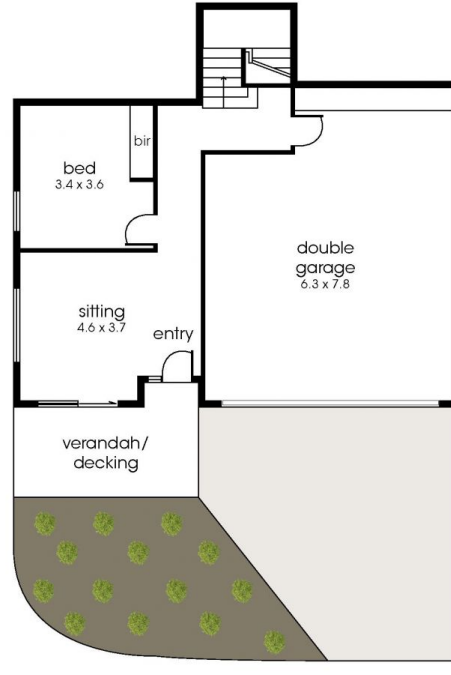
John Couper
0428 745 449

[For full version visit the website](https://coupersrealty.com.au)

<https://coupersrealty.com.au>



UPPER FLOOR



LOWER FLOOR

Internal living area
approx: 24.4 squares

Garage area
approx: 5.5 squares

Verandah area
approx: 1.3 squares

Balcony area
approx: 1.2 squares

Total area
approx: 32.4 squares