

COUPERS

LIFESTYLE PROPERTIES



13 Seaview Close Rosebud VIC

4 2 2

Welcome to 13 Seaview Close, Rosebud - where relaxed Peninsula living meets convenience and style. This spacious four-bedroom, two-bathroom home offers beautiful bay views, two generous deck areas perfect for entertaining, and a private, landscaped garden ideal for family enjoyment.

Located close to the Two Bays Walking Track, stunning local beaches, popular cafés, and two nearby golf courses, this property also places you within easy reach of the Peninsula's renowned wineries and cellar doors. You'll also love the convenience of being just 1.5km from the popular Waterfall Gully shops - a local favourite for everyday essentials, great coffee, and more.

Whether you're seeking a permanent move or a weekend

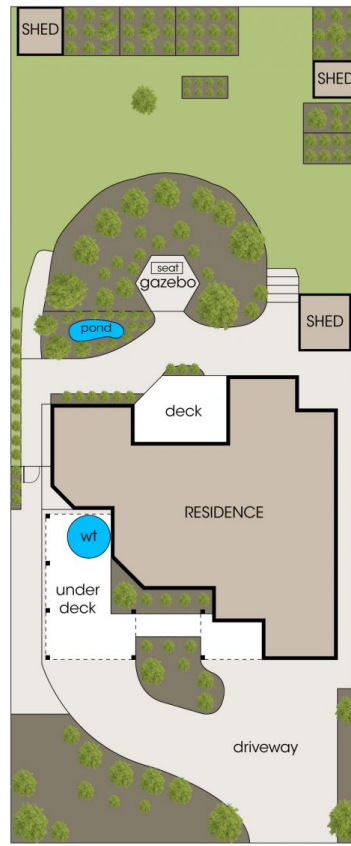
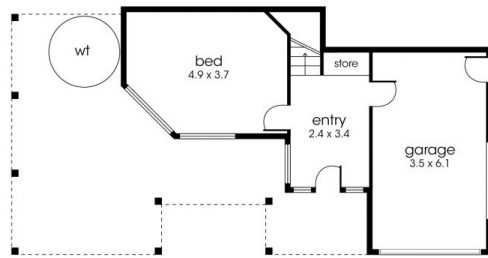
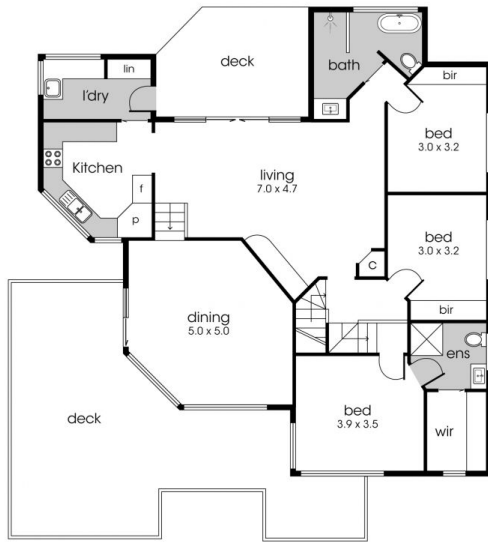
Type : House
Price : \$ 980,000
Land Size : 803 sqm
View : <https://coupersrealty.com.au/8343979>



Paul Wells
0428 745 449

[For full version visit the website](https://coupersrealty.com.au)

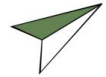
<https://coupersrealty.com.au>



Internal living area
approx: 19 squares

Deck area
approx: 7 squares

Total area
approx: 26 squares



13 Seaview Close, Rosebud

COUPERS
LIFESTYLE PROPERTIES