




# COUPERS

LIFESTYLE PROPERTIES



**35 Exford Drive Mornington VIC**

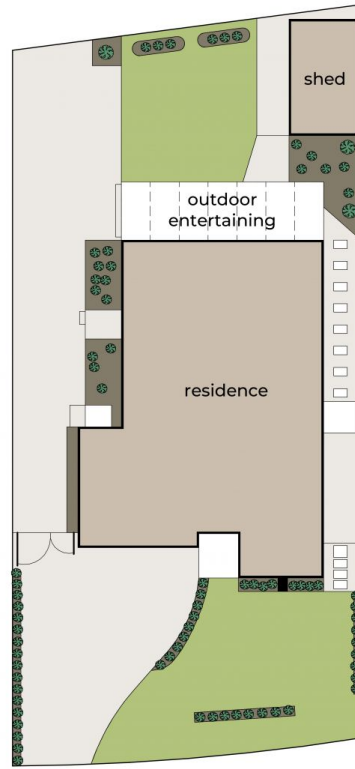
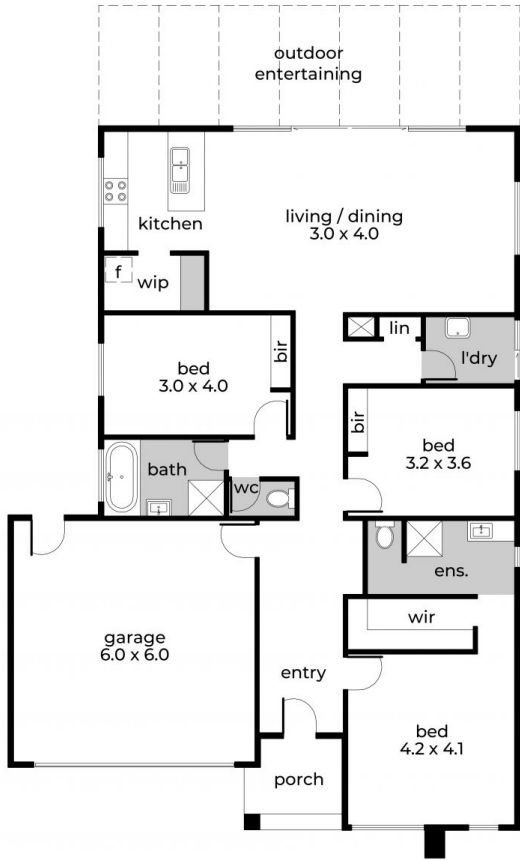
**3**  **2**  **2** 

Set in a quiet pocket of Mornington, this near-new 3-bedroom home offers low-maintenance living with plenty of space to spread out. There's a generous shed, plus off-street parking for a boat or caravan ideal for tradies, travellers or families needing flexibility. Enjoy easy access to local shops, parks, and schools, all just minutes from home with Padua College within walking distance. Stylish interiors, a quality build, and a great location this one ticks all the boxes.

**Type** : House  
**Land Size** : 677 sqm  
**View** : <https://coupersrealty.com.au/8375621>



**Paul Wells**  
0428 745 449



Internal living area  
 approx: 18.39 squares  
 Outdoor entertaining area  
 approx: 2.91 squares  
 Total area  
 approx: 21.3squares

35 Exford Drive, Mornington

**COUPERS**  
 LIFESTYLE PROPERTIES