

COUPERS

LIFESTYLE PROPERTIES



22 The Ridge Road Fingal VIC

3 2 2

Set within the secure Moonah Links estate, this architecturally designed home offers relaxed living surrounded by native landscape and golf course views.

The split-level layout creates light-filled living spaces that open to a large deck overlooking the 16th fairway of the Legends Course. Timber floors run through the main living area, while large windows bring in natural light and capture the outlook across the course.

The kitchen sits at the centre of the home with stone benchtops, Bosch appliances including a gas cooktop, and a full butler's pantry.

Type : House
Land Size : 637 sqm
View : <https://coupersrealty.com.au/8639080>



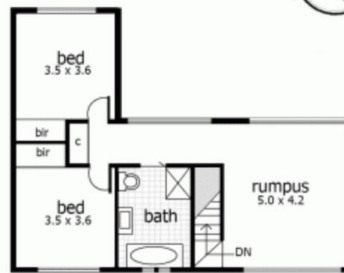
John Couper
0428 745 449

[For full version visit the website](https://coupersrealty.com.au)

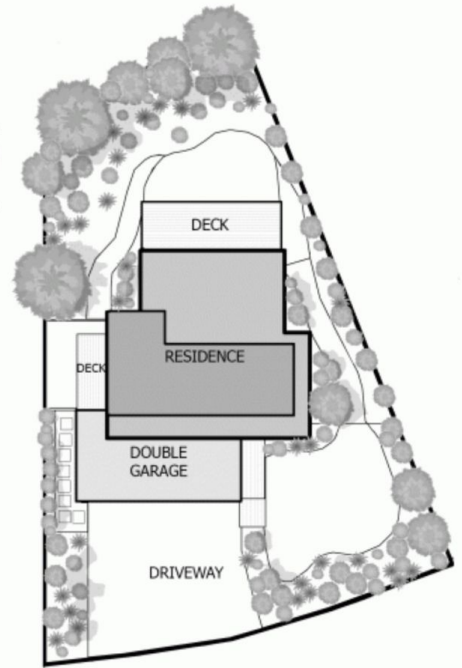
<https://coupersrealty.com.au>



GROUND FLOOR



FIRST FLOOR



COUPERS
LIFESTYLE PROPERTIES

22 The Ridge Road, Moonah Links