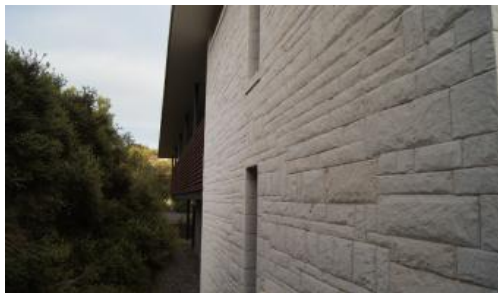


13 Woodland Way, Fingal



Your Treehouse

This 4 bedroom home is of generous proportions and built to maximise natural light. The main entrance to the house is located on the first floor, reached via a 'bridge'. At this entry level is the spacious main bedroom with walk-in-robe and ensuite; 2nd bedroom, bathroom/powder room; expansive open-plan living/kitchen/dining area overlooking the tree tops to the golf course and opening onto a large wrap-around entertainment deck.

Downstairs at ground level sits 2 more double bedrooms with ensuites, second living area; and powder room. the use of timber contrasted with stone in the exterior and interior enhances the design features.

The surrounding tree canopies, fully visible from the interior adds to the serenity of the setting.

The above information provided has been furnished to us by the vendor/s. We have not verified whether or not that information is accurate and do not have any belief in one way or the other in its accuracy. We do not accept any responsibility to any person for its accuracy and do no more than pass it on. All interested parties should make and rely upon their own inquiries in order to determine whether or not this information is in fact accurate.

🛏 4 🏠 4 🚗 2 📏 878 m2

Price	SOLD
Property Type	Residential
Property ID	109
Land Area	878 m2

Agent Details

John Couper - 0411 884 641

Office Details

Fingal
55 Peter Thomson Drive, Fingal VIC 3939
Australia
0411 884 641

COUPERS
LIFESTYLE PROPERTIES